

For parents &  
Educators

# BEE TRUE TO YOU

THE HIVE GUIDE  
2023-2024 Edition



**THE HIVE GUIDE**

**SAMPLE**

# BEE TRUE TO YOU



## TOBI & BTTY'S HIVE GUIDE

BY ASHLEY TOBIAS

TOBI & BTTY here!

This following booklet is filled with fun and educational ways to continue on with our mission of teaching respect, kindness and discovering identities through the POWER of music. Check out our lessons, discover your OWN voice, and report back to us via email when you see someone "taking the sting out of bullying" in your school! OR, simply someone being their truest selves! Keep rocking out and we'll see you again at a LIVE or VIRTUALLY LIVE CONCERT near you!.... *Stay safe, healthy and positive!*

BEE TRUE TO YOU

### TABLE OF CONTENTS

Activities • P. 3 - 27

Reading • P. 27 - 33

Follow Up Questions • P. 34 - 36

Message from the Founder • P. 37

Social Media Websites • P. 39

**SAMPLE**

# TOBI & BTTY CONNECT WITH COMMUNITIES ALL ACROSS THE COUNTRY SPREADING THE BUZZ. CAN YOU MAKE A STAR IN THE STATE YOU LIVE IN?

by Ashley Tobias

## USE THE MAP BELOW



- Can you draw a  in Arizona?
- Draw an  in New York?
- Draw  in California!
- Put a  around North Carolina!
- How many states have you traveled to?
- Can you mark an  in those states?

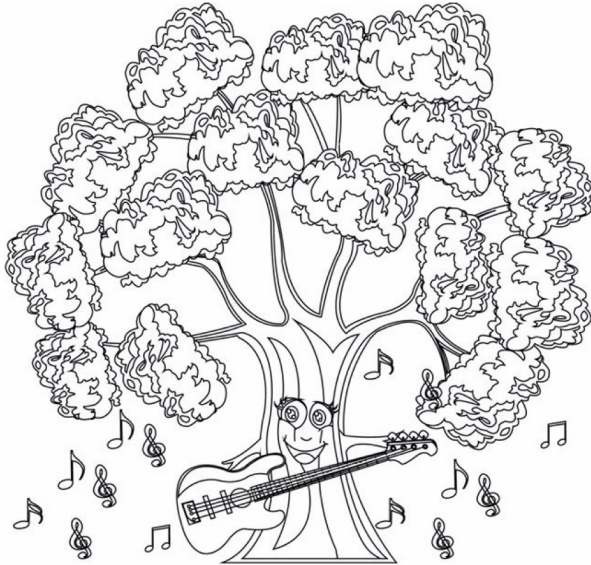
**SAMPLE**



# ACTIVITIES



## TREE TIME



### WHAT YOU WILL NEED

Please see below for a list of all arts, crafts and items required for this project:

- ▶ Bully Tree
- ▶ Autograph Tree
- ▶ Crayons | Colored Pencils
- ▶ Paper
- ▶ Scissors [optional]

### INSTRUCTIONS

by Ashley Tobias

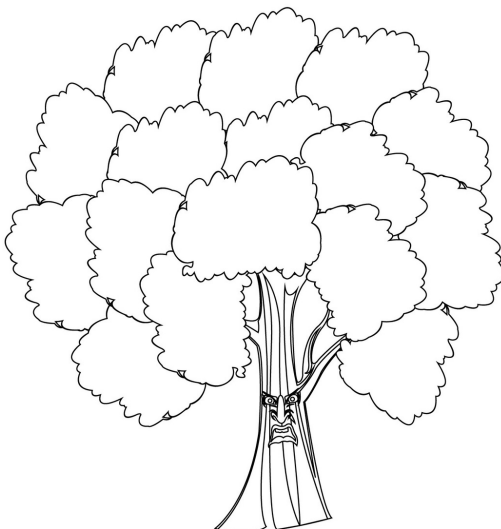
- ✓ Create your own Bully Tree. Color in the Bully Tree that is given to you.
- ✓ Once it's colored in, as a class, collectively come up with words or phrases that go in the Bully Tree: IE. Name Calling, Pushing, cyberbullying... etc.
- ✓ Create your own Autograph Tree. Color in the Autograph Tree that is given to you.
- ✓ Once it's colored in, as a class, collectively come up with words or phrases that belong in the Autograph Tree. IE: Sharing, teamwork, acceptance... etc.



### TEACHER'S CORNER

The purpose of this project is to help children easily identify negative behavior, words and phrases along with positive ones. This will give your students an idea of the appropriate way to act towards others by practicing kindness and respect...

See the trees on the following page!





# ACTIVITIES



## BRAVERY CROWN



### WHAT YOU WILL NEED

Please see below for a list of all arts, crafts and items required for this project:

- ▶ Yellow or gold construction paper
- ▶ Print out bravery crown
- ▶ Gems | Feathers
- ▶ Glue | Tape
- ▶ Staples
- ▶ Crayons | Colored Pencils

### INSTRUCTIONS

by Ashley Tobias

- ✓ Print out Bravery Crown
- ✓ Cut out crowns and bands, and staple crowns together to make one long enough to fit each child's head.
- ✓ Where you stapled the crowns together, place a piece of tape over so not to catch in the child's hair.
- ✓ Dab little amounts of glue to the circular parts of the crown and add your gems!
- ✓ Have your students color their bravery crowns however they'd like!

### TEACHER'S CORNER

This activity will give your children an extra boost of confidence! Everyone will complete the project as a group, however each bravery crown will be special and unique to THAT particular student... Please see your bravery crown template below.





# ACTIVITIES



## PICTURE TIME



### WHAT YOU WILL NEED

Please see below for a list of all arts, crafts and items required for this project:

- ▶ Printable Picture Frames
- ▶ Crayons | Colored Pencils
- ▶ Plain Paper
- ▶ Access to a mirror

### INSTRUCTIONS

by Ashley Tobias

- ✓ Print out a picture frame template.
- ✓ Have a mirror or access to a mirror close by and draw how you see yourself in the mirror. IE: Smiling, frowning, what color is your hair, your eyes, do you have any birth marks? etc...



### TEACHER'S CORNER

This Activity helps kids identify emotions on others and themselves.

Below are 4 mirror templates for your choosing.





# JOURNAL IT



Week \_\_\_\_\_

What emotion are you currently feeling?

Is this emotion positive or negative? (Circle one)

**positive** / **negative**

What caused you to feel this way?

If *NEGATIVE*, what are you going to do to return to your natural state of balance? If *POSITIVE*, how can you maintain this positive state of being?

What is your song choice of the week that reflects your current emotion?

          **Song Title**          | **ARTIST**          

|.           **Lyric that stuck out to you the most.**          

Write down 1 thing you are grateful for, this week.

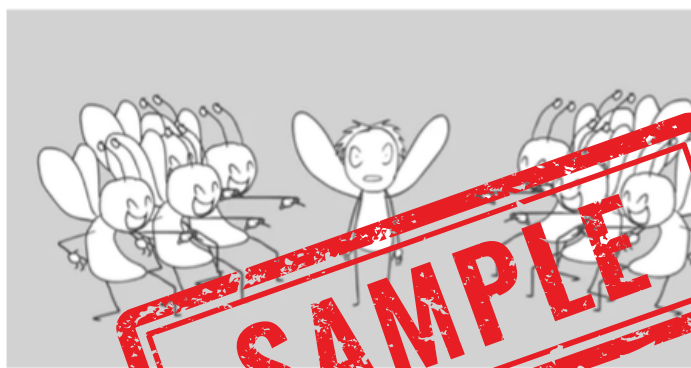
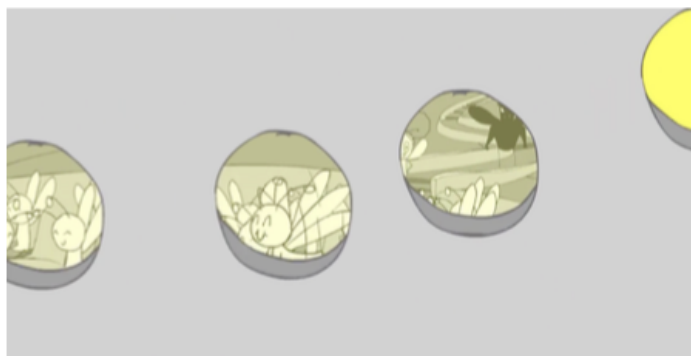
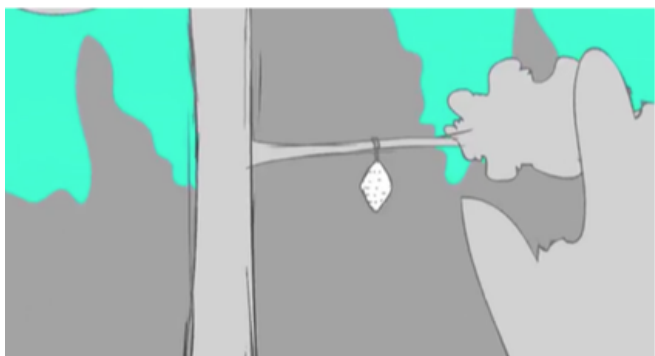




# READING



STORYTIME: TOBI MEETS BTTY







# FOLLOW UP



## QUESTIONS & WORKSHEETS

- HOW DID THE STORY MAKE YOU FEEL?
- WHAT MESSAGES DO YOU REMEMBER FROM THE SHOW?
- WHAT WAS BTTY'S STORY AND WHY IS IT IMPORTANT?
- WHAT WAS TOBI'S STORY AND WHY IS IT IMPORTANT?
- WHAT IS A ZING??
- WHAT ARE STINGERS??
- WHAT DOES IT MEAN TO BE A TRUE FRIEND?
- WHAT DOES IT MEAN TO YOU, TO BE YOUR TRUEST SELF?
- WHO IS THE HERO IN THE STORY?
- WHAT WAS THE PURPOSE OF THE FAIRY GODMOTHER
- WHO IS THE VILLAIN AND WHY?
- DO YOU REMEMBER THEIR PLEDGE?

