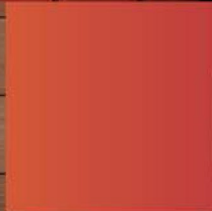


# SPOTLIGHT

PROGRAM GUIDE  
JANUARY-JUNE 2020



These programs are made possible in part  
by funds from the NJ State Council on the Arts.



BERGENPAC.ORG



## YOUR LOCAL JAGUAR LAND ROVER STORE FOR ALL SALES AND SERVICE NEEDS

**SALES:** MON-THURS 9AM-8PM | FRI-SAT 9AM-6PM | SUN CLOSED  
**SERVICE:** MON-FRI 7:30AM-6PM | SAT 8AM-4PM | SUN CLOSED

**JAGUAR  
ENGLEWOOD**



**LAND ROVER  
ENGLEWOOD**

30 VAN NOSTRAND AVE. | ENGLEWOOD, NJ 07631

[JAGUARENGLEWOOD.COM](http://JAGUARENGLEWOOD.COM) | 201-862-7755  
[LANDROVERENGLEWOOD.COM](http://LANDROVERENGLEWOOD.COM) | 201-987-5437

Quality ▪ Quality ▪ Quality



Simply the Best!



EST. 1983

## PRIME HOUSE

STEAKS ▪ CHOPS ▪ LOBSTER ▪ GOURMET SEAFOOD

AWARD WINNING SUSHI

EDGEWATER

FAIR LAWN

201.224.2013

201.703.3500

[riverpalmterrace.com](http://riverpalmterrace.com)



# WELCOME FROM THE PRESIDENT & CEO

My Fellow Supporters of the Arts,

Welcome to the Bergen Performing Arts Center and thank you for choosing to visit our theater today. As a nonprofit 501 (c) 3 organization with a mission to make live performing arts and arts education accessible to our diverse community, we strive to provide a creative home for artists and teachers of excellence who entertain, inspire and inform their audiences and students.

Part of how we deliver on our mission is through our Arts Access initiative, which is lauded as the best of its kind in the country. We partner with local organizations serving residents who wouldn't otherwise be able to attend the theater because of financial constraints and give away up to 200 tickets to every performance. I must thank our supporters who make this extraordinary program possible and help bring joy to very deserving segments of our community. To date, we have given out over 35,000 tickets!

We also welcome thousands of children to the theater through our School Time Series, often providing their first professional theater experience. This is part of Beyond bergenPAC, our educational outreach initiative. In total, we reach 16,000 students from more than 140 schools across 96 districts in 8 counties with teacher residencies, assemblies and workshops each year.

Located down the street at 1 Depot Square in the former home of the legendary Bennett Studios, The Performing Arts School at bergenPAC also teaches dance, theater and music to more than 1,000 students. In keeping with our mission, we have awarded more than \$375,000 in scholarships since the school opened so that no one is ever turned away because of an inability to pay.

We know you have plenty of great entertainment options in our region, and so I thank you again for choosing bergenPAC. I hope you now also have a better appreciation for everything we accomplish here. We are extremely grateful to our board of trustees, staff, volunteers, sponsors, foundations, individual donors, and the nearly 1,300,000 patrons who have embraced bergenPAC as their own.

Support from all sectors of our community – individuals, corporations, foundations and government entities – makes it possible for us to LEAD THE WAY in northern New Jersey's cultural landscape. As ticket sales only cover a portion of the costs of our programs, our benefactors are critically important. It is a blessing to have the ability to give back – please join us if you can.

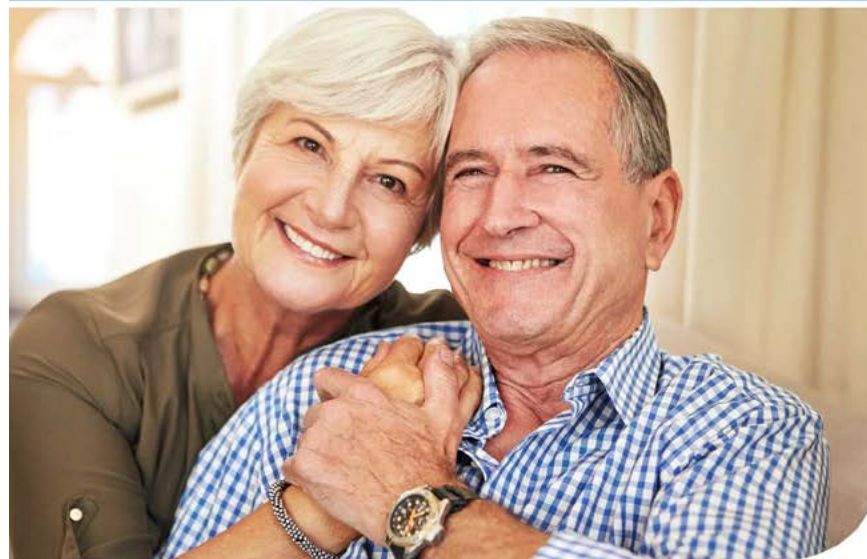
Sincerely,



Dominic Roncace  
President & CEO



**ONE TEAM. ONE VISION.**



“As a premier care provider, CareOne is committed to providing exceptional quality of care to all of our patients through our dedication to outstanding clinical practices.”

— Daniel Straus, CareOne CEO & Elizabeth Straus, CareOne EVP

For more information, contact us at  
**201.652.1950**

**CAREONE**  
At Ridgewood Avenue

90 W. Ridgewood Ave. Paramus, NJ 07652  
www.care-one.com



CHEERS  
TO  
MORE  
PERKS



INTRODUCING

**Westfield**

REWARDS

Join for free today, and  
receive a \$10 rewards credit

To enroll, visit: [westfield.com/gardenstateplaza](https://www.westfield.com/gardenstateplaza)

Terms and conditions apply, please visit  
[westfield.com/gardenstateplaza/rewards/faq](https://www.westfield.com/gardenstateplaza/rewards/faq) for details.

Earn 1 point for every \$1 you spend at  
Westfield Garden State Plaza

## HOW IT WORKS



Sign up and register your credit card



Shop and earn points every time you use your  
registered card at Westfield Garden State Plaza



Receive rewards right to your phone

**Westfield**

GARDEN STATE PLAZA

 @GardenStatePlaza  @GSPlaza



## BOARD OF TRUSTEES

Hon. Frank Huttie III, Chairman & Founder

Chris Yegen, Vice Chairman

Robert Cook, Treasurer

Mitchell Sacks, Vice President

Koryn Schermer, Vice President

Edmondo Schwartz, Chairman Emeritus

|                           |                    |                |
|---------------------------|--------------------|----------------|
| Christine M. Bae          | Jane Bean          | Fadi Chartouni |
| Julie Diaz                | Ludmila Golad      | Amelia Gold    |
| Rafi Jafri                | Bernard J. Koster  | Devry Pazant   |
| Gary A. Phillips          | Dominic Roncace    | Susan Russ     |
| Susan Scimone-Bellini     | Michael J. Shannon | CJ Strock      |
| Hon. James J. Tedesco III |                    |                |

Dionne Warwick, 2019 Capital Campaign Honorary Chairperson

Angelica Berrie, 2005 Capital Campaign Honorary Chairperson

## FOUNDATION BOARD

Angelica Berrie, Honorary Chairperson

|                              |                       |                       |
|------------------------------|-----------------------|-----------------------|
| J. Agresta                   | Donald Aronson        | Michel Bittan         |
| Marc Byron                   | Robert Cook           | Eugene & Julie Diaz   |
| Donald Drapkin (1949-2016)   | Karen Eisenbud        | Hon. Frank Huttie III |
| Hon. Valerie Vainieri Huttie | Lawrence Kaplen       | Michael Kempner       |
| Sam Mann                     | Lucia Palestroni      | Kelli Rabke           |
| Rob Rey                      | Kay Ritta (1934-2017) | Mitchell Sacks        |
| Edmondo Schwartz             | Stanley Shirvan       | Lori Stokes           |
| Chris Yegen                  |                       |                       |

Founded on April 30, 2003, bergenPAC was formed by a small group of residents who developed a plan to revitalize the Center. Working together, our founding members built the framework to enhance the quality of life by creating a home for arts and education for families throughout Northern New Jersey.

## FOUNDING MEMBERS

Hon. Frank Huttie III, Founder

Donald Aronson

Robert Cook

Sam Mann

Edmondo Schwartz

Chris Yegen

## HONORARY LIFETIME BENEFACTORS

The Board of Trustees of the Bergen Performing Arts Center gratefully acknowledges the Honorary Lifetime Benefactors for their significant and generous contributions.

Myron & Elaine Adler

Alfiero & Lucia Palestroni Foundation, Inc.

Donald & Deborah Aronson

Benzel-Busch Motor Car Corp.

Angelica Berrie

The Blanche & Irving Laurie Foundation

Marc & Robin Byron

City of Englewood

Robert & Judy Cook

Karen Eisenbud

Englewood Hospital & Medical Center

The Henry & Marilyn Taub Foundation

Hon. Frank Huttie III & Hon. Valerie Vainieri Huttie

The Kaplen Foundation

Samuel & Emily Mann

New Jersey State Council of the Arts

New York Times

RITTA

Russell Berrie Foundation

Edmondo & Miyako Schwartz

TD Bank

Chris & Lonna Yegen

## ADMINISTRATION

Dominic Roncace  
*President & CEO*  
Melissa Ortiz  
*Administration Assistant*

## BOX OFFICE

John Howard  
*Director of Ticketing*  
Eric Holsten  
*Box Office Manager*  
Sean Mulligan  
*Box Office Coordinator*  
Roxanne Wadlow  
*Senior Box Office Associate*  
Francesca Colombo  
*Box Office Associate*  
Shenita Elder  
*Box Office Associate*  
Tiffany Ormsby  
*Box Office Associate*  
Katrina Tutschek  
*Box Office Associate*

## DEVELOPMENT

Devin Cohan  
*Director of Capital Campaign  
& Strategic Partnerships*  
Rosalie Berlin  
*Community Engagement Manager*  
Helene Cohen  
*Arts Access  
& Client Services Manager*  
Shoshana Davis  
*New Business Development  
Manager*  
Karen Forgione  
*Grants & Membership Manager*  
Lindsey Chait  
*Membership Concierge*  
Maria Sozio  
*Membership Concierge*  
Donna Tellian  
*Membership Concierge*

## EDUCATION

Alexander Diaz  
*Creative Director of  
Education & Outreach*  
Becky Serico  
*Managing Director*  
TK Bellinger  
*Education Associate*  
Arlene Grunfeld  
*Assistant Managing Director*  
Gerrilynn Guerrero  
*Assistant Director of Outreach*  
Roberta Mathes  
*Artistic Director, Dance*  
Tom Tarkazikis  
*Recording/Sound Engineer*

## FINANCE

Scott Foster  
*Director of Finance/Controller*  
Venetia DiMarzo  
*Assistant Director of Finance*

## MARKETING

Diane Niedzialek  
*Director of Marketing*  
Tori Greig  
*Graphic Designer  
& Web Content Manager*  
Jeremy Lebled  
*House Photographer*  
Sam Passow  
*Public Relations  
& Social Media Manager*

## OPERATIONS

Marc Farrand  
*Director of Operations*  
Jessica Thom  
*Assistant Director of Operations*  
Barbara Bian  
*Bar Manager*  
Grace Debord  
*Bartender*

Kristen Dunne  
*Bartender*  
Diana Lopes  
*Bartender*  
Lina Lozada  
*Bartender*  
Maria Roman  
*Bartender*  
Sheila Terry  
*Bartender*  
Ahmad Albaquesien  
*Custodial Staff*  
Gary Hanna  
*Custodial Staff*  
Alvaido Hewitt  
*Custodial Staff*  
Imed Hrich  
*Custodial Staff*  
Maria Lopez  
*Custodial Staff*  
Mark Albert  
*Assistant House Manager*  
Charles Campbell  
*Assistant House Manager*  
Michele Campbell  
*Assistant House Manager*  
Yvette Rodman  
*Assistant House Manager*  
Stacey Soycher  
*Assistant House Manager*  
Brent Watson  
*Assistant House Manager*  
Toni Willis  
*Runner/Hospitality*  
Derrick "Doc" Taylor  
*Security Supervisor*  
Sheldon Barnes  
*Assistant Security Supervisor*  
Manfred Gates  
*Security*  
Dwayne Humes  
*Security*

Toni Plantamura  
*Security*

## PRODUCTION

Joe Feola  
*Technical Director*  
Jeff Eigo  
*Building Maintenance Supervisor*  
Dan Hayden  
*Physical Plant Manager*

## IATSE CREW

John Fowler  
*Leadman/Master Electrician*  
Greg Freedman  
*Head Audio*  
Julian Lee  
*Head Carpenter*  
Steve Hegel  
*Flyman*  
Dylan Scarzafave  
*Audio 2*  
Joe Citakian  
*Apprentice*

## PROGRAMMING

Cory Ness  
*Director of Programming*  
Aly Adamopoulos  
*Programming  
& Special Accounts Manager*

## PERFORMING ARTS SCHOOL FACULTY

**Dance**  
Kalena Brown  
Dormeshia Edwards  
Vera Huff  
Dominique James  
Yucari Kobayashi  
Kirsten Lane  
Amelia Lowe  
Miro Magloire  
Roberta Mathes  
Alexandra Williamson

## Early Childhood

Wendy Bain (Music)  
Kalena Brown (Dance)

Rebecca Sonia (Dance)  
Anthony Caiola (Theater)

**Front Desk Associates**  
Christine Robert

## Music

Amelia DeMayo  
Glenn Gordon  
Nadine Herman  
Katherine Mena  
Yoonah Oh  
Tom Tarkazikis  
Liliana Tzaneva

## Musical Theater/Theater

Anthony Caiola  
Gregory Hanks  
Katherine Mena  
Rebecca Sonia

*Photos by Jeremy Lebled*





# THANK YOU TO OUR VOLUNTEERS

|                      |                     |                           |
|----------------------|---------------------|---------------------------|
| Victoria Addison*    | Maria Green         | Marianne Pellegrini       |
| Pauline Alfis        | Margaret Haynes     | Dick Roberts              |
| Gwendolyn Ash        | Stuart Heller       | Vivian Rodgers            |
| Debbie Ayton         | David Highet        | Max Rodriguez             |
| Phyllis Bogen        | Carolyn Hildenbrand | Evelyn Samtak             |
| Melinda Bonner       | Deborah Hopping     | Lalitha Sarma             |
| Susan Byrne          | Cathy Kennedy       | Shari Schwartz            |
| Lee Caballero        | Lillian Kleinfeld   | Howard & Sheryl Seiferas  |
| Marilyn Casson       | Robin Leavy         | Yelena Shapiro            |
| Hazel Cogar          | Arlene & Tom Locola | Stevi Shapiro-Wellington* |
| Sharon & Carey Cohen | Paul MacDonald      | Hazel Smith*              |
| Terry Cohn           | Wendy Mann          | Maria Sozio               |
| Michelle Crawford    | Farida McDonald     | Ellinor Stein             |
| Susan DePalma        | Lillie Michelli     | Jeff Stiles               |
| Joan Doheny          | Jerry & Dean Morgan | Jeffrey & Stephanie Sylva |
| Robert Evans         | Nancy Myers         | Gail Thompson             |
| Jay Fernando         | Steven Nerlfi       | Arlene Weinberg           |
| Trish Frisbie        | Althea Nolan        | Monica Weiss              |
| Diane Goldman        | Jan Nourain         | Rhonda White              |
| Carol Gomes          | John Ottino         | Dianne Zeigler            |
| Linda E. Gould       | Anna Pantoliano     | Arlene Zweifler           |

Each season we continue to grow our programs through our concert presentations, The Performing Arts School, our Arts Access Program and The Sandy Bennett Art Gallery. We could not do any of this work without the generosity of the many volunteers who donate their time and talents to bergenPAC.

Thank you,  
bergenPAC Board of Trustees & Staff

*\*Volunteer Coordinators*

At PSE&G, your safety is our top priority.

## Smell Gas? Act Fast!



Natural gas is a clean-burning and safe source of energy, but it can be dangerous when there is a faulty appliance or improper use. Because natural gas is odorless and colorless, a distinctive odor, like **rotten eggs**, is added to it to help in the detection of leaks.

### If you smell gas, hear hissing, or suspect a leak, act fast:

- Open windows and doors to ventilate the building
- Leave your home as quickly as possible and move away from the building. If the odor is noticed outside, get away from where you suspect the gas is leaking
- Once you are in a safe environment at least 350 feet away from the suspected gas leak area, call PSE&G immediately at 1-800-880-PSEG (7734), or call 911

### If you suspect a gas leak, do NOT:

- Operate light switches, vapes or smoke
- Attempt to determine the source of the odor
- Light a match or leave candles burning
- Turn appliances and flashlights on or off
- Start a car
- Use a telephone/cell phone or ring a doorbell

For more information about gas safety, visit [pseg.com/smellgas](https://www.pseg.com/smellgas)



The theater you are seated in first opened in 1926 as the Englewood Plaza movie theater. United Artists purchased the building in 1967 but was forced to close its doors in 1973.

John Harms (1906-1981), a local organist and teacher, began his career as an impresario in 1941 by arranging concert appearances in North Jersey with several famous and lesser-known artists. He booked acts, rented the performance space and wrote press releases to promote the shows. His dream of a concert hall of his own became a reality when the Englewood Plaza came on the market. Under his leadership, a group of residents brought the John Harms Center to life on October 10, 1976 with the performance of the Russian pianist Lazar Berman.

Two major renovation projects in the 1990s turned the theater into a modern concert hall and media facility, while preserving the vintage acoustics that made it a sought-after performance and recording space. The John Harms Center was the largest arts center in northern New Jersey and one of the biggest in the state. Its closing on April 14, 2003 left a gaping hole in the region's cultural life.

A group of dedicated individuals led by Frank Huttie III were determined to preserve this special theater that had brought some of the world's finest artists "right next door" for so many years and on April 30, 2003 they began efforts to create the Bergen Performing Arts Center (bergenPAC).

The doors of this historic institution were reopened in the Fall of 2004 with the creativity and commitment of these residents enhancing the spirit and tradition of its original founders. A public/private partnership was formed between the City of Englewood, Bergen County, New Jersey State agencies and private arts patrons and donors. This mission-driven team worked with its supporters to build the framework of the bergenPAC you know today.

Today over 200 performances are presented in the theater – reaching over 150,000 patrons each year – while the Performing Arts School at bergenPAC teaches dance, theater and music to over 1,000 students. Its educational outreach programs impact another 16,000 students. One highlight is the summer musical, which draws talented teens from around the region and boasts alumni who went on to appear on Broadway and in movies and TV shows.

Through its board, staff, volunteers and partners, bergenPAC strives to keep making live performing arts and arts educations accessible to everyone in the community.

**Thank you for helping us LEAD THE WAY as the region's cultural beacon.**



Globally, our demand for natural resources will more than double our current supply. If we don't start working towards a solution now, it will be too late.

That's why SUEZ is consolidating our businesses around a single mission — preparing for the resource revolution. By pooling our resources today, we're able to bring a global network to work on a local level. We do this so you can continue to enjoy the great water and service you do today, for many years to come.

Learn more at: [mysuezwater.com](http://mysuezwater.com)

 SUEZ Water North Jersey

 SUEZwaterNJ



ready for the resource revolution





## Partners in Success Proud to Support



285 Straight Street, P.O. Box AY, Paterson, NJ 07509  
973.345.5600 • Emergency Service 201.933.3569

[www.RapidService.com](http://www.RapidService.com)

### Turnkey Services:

- Electrical
- Mechanical
- Electronics



SERVICE

QUALITY

EXPERTISE

# LEAD THE WAY

## FOR COLLEGE

Our unique High School Arts Impact Initiative brings students to our Performing Arts School to study dance, theatre, music and more during the day, where they can earn college credit through Bergen Community College.

We need you to play a supporting role.  
Visit [bergenpac.org/donate](http://bergenpac.org/donate) today.

#LEADTHEWAY

bergen  
**PAC**  
NONPROFIT ORGANIZATION

Photo by Jeremy Lebled



## Home is where award- winning care is.

Once again, four Hackensack Meridian Health hospitals are ranked among the best in New Jersey by *U.S. News & World Report*. Because home is where compassionate, uncompromising care happens every day. Visit [hackensackmeridianhealth.org/usnews](http://hackensackmeridianhealth.org/usnews)



Hackensack  
Meridian Health  
Hackensack University  
Medical Center

HACKENSACK UNIVERSITY MEDICAL CENTER / JERSEY SHORE UNIVERSITY MEDICAL CENTER  
RIVERVIEW MEDICAL CENTER / OCEAN MEDICAL CENTER



*The Russell Berrie Foundation  
celebrates the Cultural Renaissance  
of New Jersey and is proud to  
support the bergenPAC's efforts  
to contribute to this renaissance.*

*Angelica Berrie, President  
The Russell Berrie Foundation*



*Russell Berrie  
1933 - 2002*



italian farm-to-table steakhouse

**sofia**

dinner | brunch | cigar lounge

*In the heart of downtown Englewood, sofia offers dry-aged USDA PRIME steak cooked to your desired perfection, seafood flown in fresh daily, house made pasta and authentic modern Italian dishes created using local and seasonal ingredients — many cooked in a wood-burning oven.*

follow sofia   

36 engle street, englewood, nj 07631 • reservations 201.541.8530 • [sofiaenglewood.com](http://sofiaenglewood.com)





# LEAD THE WAY

## FOR ENRICHMENT

beyond bergenPAC impacts more than 15,908 students in 142 schools in 96 districts across 8 counties. We literally go beyond bergenPAC to deliver assemblies, residencies and more to schools, while also bringing students to the theater for interactive shows.

We need you to play a supporting role.  
Visit [bergenpac.org/donate](http://bergenpac.org/donate) today.

#LEADTHEWAY



## Together We Can Make A Difference

At Lakeland Bank, giving back to the communities we serve has always been one of our top priorities. Whatever it takes to keep our local towns and neighborhoods strong and thriving, you can count on us to lend a hand.

[LakelandBank.com](http://LakelandBank.com) ■ 866-224-1379







Thank you for choosing bergenPAC today. We hope you enjoyed your visit and would love to see you again soon. To see what events are coming up, visit [bergenpac.org](http://bergenpac.org).



# REGISTER FOR CLASSES TODAY!



## PERFORMING ARTS PROGRAMS FOR ALL AGES & ABILITIES

*Photos by Jeremy Lebled*



THE PERFORMING  
ARTS SCHOOL at  
**bergen  
PAC**  
NONPROFIT ORGANIZATION

[bergenpac.org/education](http://bergenpac.org/education) • 201-482-8194

   @bergenPACPAS

1 Depot Square • Englewood, NJ • 07631



## Life inspires art. Art inspires living.

At Wilmington Trust, we're proud to support people and organizations whose creativity inspires us. That's why we offer our time, energy and resources and encourage others to do the same.

We are proud to support the  
Bergen Performing Arts Center.



**WILMINGTON  
TRUST**

PART OF THE M&T BANK FAMILY

Anthony Viducic | 201-580-4656 | [aviducic@wilmingtontrust.com](mailto:aviducic@wilmingtontrust.com)

[wilmingtontrust.com](http://wilmingtontrust.com)

©2019 Wilmington Trust Corporation and its affiliates. All rights reserved.



# UPCOMING SHOWS

ON THE TAUB STAGE AT BERGENPAC

# NEW SHOWS ADDED WEEKLY!

CHECK BACK AT BERGENPAC.ORG FOR ALL NEW EVENTS.

Please note that programs, dates and artists are subject to change.

## JANUARY

- |    |      |     |  |
|----|------|-----|--|
| 25 | Sat  | 8PM | Brian Wilson<br><i>presented by WFUV</i> |
| 26 | Sun  | 7PM | Jackson Galaxy: Total Cat Mojo Live      |
| 30 | Thur | 8PM | The Naked Magicians                      |
| 31 | Fri  | 8PM | Dead On Live: 73-74                      |

## FEBRUARY

- |    |      |         |  |
|----|------|---------|--|
| 1  | Sat  | 8PM     | Rick Springfield   |
| 4  | Tues | 8PM     | Emanuel Ax Classical Recital   |
| 7  | Fri  | 8PM     | Patton Oswalt  |
| 8  | Sat  | 8PM     | Sons of Apollo   |
| 9  | Sun  | 1 & 4PM | Dinosaur World Live  |
| 12 | Wed  | 7:30PM  | Collective Soul at 25: Keep on Shining the Light                                     |
| 13 | Thur | 8PM     | Brian McKnight Live in Concert   |
| 15 | Sat  | 8PM     | Luis Enrique & Conjunto Clasico  |
| 16 | Sun  | 7PM     | Mike Super 2.OH! SHOW!   |
| 17 | Mon  | 2 & 6PM | Blippi Live!   |
| 21 | Fri  | 8PM     | Bob Saget  |
| 22 | Sat  | 8PM     | Super Diamond - The Neil Diamond Tribute   |
| 23 | Sun  | 8PM     | America 50th Anniversary Live in Concert   |
| 24 | Mon  | 7:30PM  | Deepak Chopra<br><i>presented by Care One</i>  |
| 25 | Tues | 8PM     | New Shanghai Circus  |
| 28 | Fri  | 8PM     | Air Supply: Lost in Love Experience  |
| 29 | Sat  | 8PM     | American Pop<br><i>featuring The Grass Roots, The Buckinghams &amp; The Box Tops</i> |

## MARCH

- |    |      |        |  |
|----|------|--------|--|
| 7  | Sat  | 8PM    | Steve Hackett: Genesis Revisited   |
| 8  | Sun  | 7PM    | Chris Botti  |
| 11 | Wed  | 8PM    | The Robert Cray Band   |
| 12 | Thur | 8PM    | Sir James Galway   |
| 13 | Fri  | 8PM    | Rome & Duddy: Friends & Family Acoustic Tour                                   |
| 18 | Wed  | 8PM    | RAIN: A Tribute to The Beatles   |
| 19 | Thur | 7:30PM | Beethoven's Birthday Bash<br><i>presented by New Jersey Symphony Orchestra</i> |
| 20 | Fri  | 8PM    | Jon Secada   |



Jackson Galaxy



Brian McKnight



Air Supply



Chris Botti

## MARCH (CONT.)

- |    |      |        |  |
|----|------|--------|--|
| 22 | Sun  | 7PM    | Kyung Wha Chung Classical Recital              |
| 24 | Tues | 8PM    | Daughtry<br><i>Benzel-Busch Concert Series</i> |
| 26 | Thur | 8PM    | Dave Mason with special guest John Mayall      |
| 27 | Fri  | 8PM    | Brian Kirk & the Jirks                         |
| 28 | Sat  | 7:30PM | Disney Dance Upon A Dream                      |

## APRIL

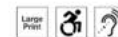
- |    |      |          |   |
|----|------|----------|---|
| 2  | Thur | 7:30PM   | Tchaikovsky's Fifth Symphony<br><i>presented by New Jersey Symphony Orchestra</i>         |
| 3  | Fri  | 8PM      | A Bowie Celebration   |
| 4  | Sat  | 8PM      | Jay Leno  |
| 5  | Sun  | 7:30PM   | Melissa Etheridge: The Medicine Show  |
| 10 | Fri  | 6PM      | Scooby-Doo! and The Lost City of Gold<br><i>presented with Metropolitan Entertainment</i> |
| 11 | Sat  | 11AM     | Scooby-Doo! and The Lost City of Gold<br><i>presented with Metropolitan Entertainment</i> |
| 11 | Sat  | 8PM      | Demetri Martin: Wandering Mind Tour   |
| 17 | Fri  | 8PM      | Almost Queen  |
| 18 | Sat  | 8PM      | New Jersey Ballet's Don Quixote   |
| 19 | Sun  | 1 & 4PM  | New Jersey Ballet's Cinderella  |
| 26 | Sun  | 12 & 3PM | Llama, Llama Live!  |

## MAY

- |    |     |         |   |
|----|-----|---------|---|
| 1  | Fri | 8PM     | Kashmir: The Live Led Zeppelin Show   |
| 2  | Sat | 8PM     | The Ultimate 70s<br><i>featuring Poco, Pure Prairie League &amp; Orleans</i>  |
| 8  | Fri | 8PM     | Victor Manuelle   |
| 15 | Fri | 8PM     | Deena Blizzard – One Funny Mother   |
| 16 | Sat | 7PM     | Oh What A Night of Doo Wop & Rock N Roll Vol. IV<br><i>presented with LARS Enterprises; sponsored by Age-Friendly Englewood</i> |
| 17 | Sun | 7PM     | Sinbad  |
| 31 | Sun | 2 & 6PM | Baby Shark Live!  |

## JUNE

- |    |      |     |  |
|----|------|-----|--|
| 15 | Mon  | 8PM | Happy Together Tour 2020   |
| 16 | Tues | 7PM | northjersey.com Sports Awards  |
| 20 | Sat  | 8PM | Chubby Checker & the Wildcats and Friends<br><i>featuring Jay Siegel's Tokens and Vito Picone &amp; the Elegants</i> |



Sir James Galway



Jon Secada



Melissa Etheridge



Deena Blizzard



WITNESS AN  
AWARD-WINNING  
PERFORMANCE



The stage isn't the only place to witness magic happen.  
Visit **RITTA.com** to see our award-winning work, then imagine how  
we can help give your brand the performance of a lifetime.

ritta.com | (201) 567 4400 | info@ritta.com

PROUD SUPPORTER  
OF THE ARTS AND  
ALL THINGS BEAUTIFUL.



Proud supporter of **bergenPAC.**





# ALLSHOWS .com

SPORTS, CONCERTS, THEATER & FAMILY EVENTS

800-ALL-SHOWS | 212- ALL-SHOWS  
WWW.ALLSHOWS.COM



**New York's Ticket Source**  
**SINCE 1989**

555 THEODORE FREMD AVENUE  
RYE, NY 10580

321 W 44TH STREET  
NEW YORK, NY 10036

**WWW.ALLSHOWS.COM**



**COURISTAN®**  
The foundation of any great room.

*Is Proud to support*



*for inspiring,  
entertaining and educating  
our community on  
the art of imagination.*

WWW.COURISTAN.COM • 800.223.6186  
WALL-TO-WALL CARPET • AREA RUGS • ROLL RUNNERS • CUSTOM RUGS

# REGISTERING NOW FOR EARLY CHILDHOOD



Photos by Jeremy Lebled

Our comprehensive early childhood program serves our youngest student population. Children ages 3 months to 5 years of age can enjoy their very first music, dance and theater classes. These classes will be the beginning of their journey at The Performing Arts School, and lay the foundation to create lifelong learners of the arts.

## Winter Session:

January 6, 2020 – March 15, 2020

## Spring Session:

March 30, 2020 – June 7, 2020

## Summer Session:

June 22, 2020 – August 9, 2020



[bergenpac.org/education](http://bergenpac.org/education) • 201-482-8194

   @bergenPACPAS

1 Depot Square • Englewood, NJ • 07631



**YOUR LOCAL  
JAGUAR LAND ROVER STORE  
FOR ALL SALES  
AND SERVICE NEEDS**

**SALES: MON-THURS 9AM-8PM | FRI-SAT 9AM-6PM | SUN CLOSED**  
**SERVICE: MON-FRI 7:30AM-6PM | SAT 8AM-4PM | SUN CLOSED**

**JAGUAR  
PARAMUS** |  |  | **LAND ROVER  
PARAMUS**

405 NJ-17 • PARAMUS, NJ 07652 | 877-871-8407

**JAGUARPARAMUS.COM** | 844-336-0190  
**LANDROVERPARAMUS.COM** | 844-544-2201



# LEAD THE WAY

## FOR SUCCESS

Matthew Danforth was accepted into the prestigious Tanglewood Music Institute this summer! Over 5,000 students applied to this program and only a few hundred students were accepted. This is one of the top pre-college vocal training programs in the country. Bravissimo!

We need you to play a supporting role.  
Visit [bergenpac.org/donate](http://bergenpac.org/donate) today.

#LEADTHEWAY



# Biddy O'Malley's

Irish bistro and bar



THE RECORD

*"A Superlative Irish Gastropub"*

THE NEW YORK TIMES

191 Paris Avenue, Northvale, NJ 07647 • (201) 564-7893  
36 North Van Brunt Street, Englewood, NJ 07631 • (201) 608-5545



[www.biddyomalleys.com](http://www.biddyomalleys.com)

# ENROLL YOUR CHILD IN DANCE CLASSES



## ALL AGES & ABILITIES

Creative Movement • Pre-Ballet • Classical Ballet • Hip-Hop  
Contemporary • Modern • Jazz • Ethnic Fusion • Tap



THE PERFORMING  
ARTS SCHOOL at  
**bergen  
PAC**  
NONPROFIT ORGANIZATION

[bergenpac.org/education](http://bergenpac.org/education) • 201-482-8194

   @bergenPACPAS

1 Depot Square • Englewood, NJ • 07631

## A STEAK THAT DESERVES A STANDING OVATION.



Make your big night out that much better. Come in to Ruth's Chris in Paramus tonight and experience the sizzle. Because the best memories are served on a 500° plate.

Located next to  
The Outlets at Bergen Town Center.



The Outlets at Bergen Town Center  
551.258.0013  
83 W. Spring Valley Ave.



# LEAD THE WAY

## FOR DREAMERS

Our Performing Arts School provides students with hands-on arts training by industry professionals for real-world experience and enhanced academic achievement. Kids who are exposed to the arts gain the confidence to face life as an adult – in whatever they aspire to become.

We need you to play a supporting role.  
Visit [bergenpac.org/donate](http://bergenpac.org/donate) today.

#LEADTHEWAY



You look  
after them.  
Let us look  
after you.

Holy Name makes it easy to search for experienced doctors, manage appointments and get personalized care. All that and more in one place.



Schedule an appointment today with one of our many renowned doctors at [holynamemedicalpartners.org](http://holynamemedicalpartners.org)



# BE PART OF THE EXPERIENCE



JEREMY LEBLED  
PHOTOGRAPHY

## BECOME A MEMBER TODAY!

BUY TICKETS EARLY & SAVE ON FEES

SIT IN THE BEST SEATS IN THE HOUSE

RELAX IN THE MEMBERS LOUNGE

Join online today at [bergenpac.org/membership](http://bergenpac.org/membership) or call  
our Membership Manager at 201.816.8160 x30.



Jay Leno



Air Supply



Melissa Etheridge

**bergen  
PAC**  
NONPROFIT ORGANIZATION

Our annual membership program offers members access to exclusive perks while supporting our arts education and community outreach efforts.



## Yale and Davida's love story continues.

Over 50 years of marriage and they still remember how much they love each other. Living together at the Jewish Home, Yale and Davida steal a kiss, hold hands, and make each day as sweet as it can be.

Discover more about memory care and the art of living at [JewishHomeFamily.org](http://JewishHomeFamily.org).

 **The Jewish  
Home Family**

*Advancing the Art of Living.*

PARKINSON'S CENTER  
REHABILITATION  
ASSISTED LIVING  
LONG-TERM CARE  
HOME HEALTH  
DAY CENTER  
MEMORY CARE  
AND MUCH MORE

Based in Rockleigh and River Vale  
Serving Northern NJ, Rockland, and Westchester  
201-784-1414 / [JewishHomeFamily.org](http://JewishHomeFamily.org)



# 2019-2020 SCHOOL TIME SERIES

Visiting a professional performing arts center for the first time is an extraordinary experience for a young person. Through our strategic partners, we established a School Time Series at bergenPAC that brings classroom lessons to life in a fun way, as students get to interact with the performers. There are also opportunities for post-show Q&As. Teaching faculty tickets are FREE.

To reserve your tickets or for more information about School Time Series, contact our Beyond bergenPAC team at [outreach@bergenpac.org](mailto:outreach@bergenpac.org) or call **201.482.8194 x71**.



## **The True Story of Pocahontas**

November 15, 2019 • 10AM  
(Grades: K-5) Tickets: \$8  
Duration: 50 minutes



## **I Have A Dream**

February 11, 2020 • 10AM  
(Grades: 3-12) Tickets: \$8  
Duration: 50 minutes



## **Little Engine That Could**

December 2, 2019 • 10AM  
(Grades: PreK-3) Tickets: \$8  
Duration: 55 minutes



## **Shanghai Circus**

February 25, 2020 • 10AM  
(All Ages) Tickets: \$8  
Duration: 55 minutes



## **The Very Hungry Caterpillar Christmas Show**

December 16, 2019 • 10AM  
(Grades: PreK-1) Tickets: \$8  
Duration: 50 minutes



## **Dog Loves Books**

March 9, 2020 • 10AM  
(Grades: K-2) Tickets: \$8  
Duration: 55 minutes



## **The Diary of Anne Frank**

January 14, 2020 • 10AM  
(Grades: 7-12) Tickets: \$10  
Duration: 90 minutes



## **The Little Red Hen**

April 20, 2020 • 10AM  
(Grades: K-5) Tickets: \$8  
Duration: 50 minutes



## **Dinosaur World Live**

February 10, 2020 • 10AM  
(Grades: PreK-5) Tickets: \$8  
Duration: 50 minutes



## **Newton's Apple**

April 28, 2020 • 10AM  
(Grades: 2-8) Tickets: \$8  
Duration: 50 minutes

These programs are made possible through support from:

RALPH M. CESTONE  
FOUNDATION



[bergenpac.org/schoolttime](http://bergenpac.org/schoolttime) • 201-482-8194 x71



1 Depot Square • Englewood, NJ • 07631



1994 - 2019

## A Quarter Century of Outstanding Legal Performance

Named among *Best Lawyers* and *Best Law Firms*,  
National Tier 1, by U.S. News & World Report

PRICE  
MEESE  
SHULMAN &  
D'ARMINIO, P.C.  
Attorneys and Counselors

A full-service law firm with offices in New Jersey and New York  
Our attorneys have been recognized as *Super Lawyers*, (201) Magazine  
Top Bergen Lawyers, and among the *Best Lawyers in America*

50 Tice Boulevard  
Woodcliff Lake  
New Jersey 07677  
201-391-3737  
[www.pricemeese.com](http://www.pricemeese.com)

Best Lawyers® and Best Law Firms® are registered trademarks of Woodward/White, Inc.  
No aspect of this advertisement has been approved by the Supreme Court of New Jersey



# LEAD THE WAY

## FOR SPECIAL PERFORMANCES

Our Voices in Harmony Program brings together special needs students with visiting professional teaching artists. Together, they rehearse at their schools for the students' big performance on our Taub Stage.

We need you to play a supporting role.  
Visit [bergenpac.org/donate](http://bergenpac.org/donate) today.

#LEADTHEWAY

bergen  
PAC  
NONPROFIT ORGANIZATION

Photo by Jeremy Lebled

THE PORT AUTHORITY OF NY & NJ



## OFFICIAL Airport Parking

John F. Kennedy  
Newark Liberty  
LaGuardia

SMART. CONVENIENT. COST EFFICIENT. SECURE.

## PREBOOK & PREPAY ONLINE

Online Rates Always Lower Than Drive-up Rates!

PLUS...

**No waiting around before or after your trip.**  
Barrier will lift automatically on entry and exit.

**We know your travel plans can change.**  
Change your booking up to 24 hours before you fly.

**Don't worry if the lots are full.**  
We'll have your prebooked spot waiting for you.

**Safe & Secure**  
Our parking lots have 24/7/365 security.

[parking.newarkairport.com](http://parking.newarkairport.com) | [parking.laguardiaairport.com](http://parking.laguardiaairport.com)  
[parking.jfkairport.com](http://parking.jfkairport.com) (coming Fall 2019)

Official Airport Parking  
John F. Kennedy • Newark Liberty • LaGuardia



MORE THAN JUST THE CLOSEST PARKING AVAILABLE.

Join our mailing list for special offers and seasonal discounts.  
[www.parkintheairport.com](http://www.parkintheairport.com) | [www.officialairportparkingmailinglist.com](http://www.officialairportparkingmailinglist.com)



# From your head to your toes and everywhere in between.

Whether you need a routine visit with a primary care doctor or want to have something checked out by a specialist, the Englewood Health Physician Network has you covered. Our team of more than 400 providers welcomes patients at more than 100 office locations throughout northern New Jersey and Rockland County, New York.

Find the physician who is right for you.

Call 833-234-2234 or visit [englewoodhealthphysicians.org](http://englewoodhealthphysicians.org).



## You'll feel it the moment you meet us.

Dr. James McGinty, chief of surgery at Englewood Health, believes that great surgeons are great listeners. It's why he always takes the time to let patients tell their story, explain what's going on with their health—and with their lives. He knows from deep experience that listening helps a physician make the proper diagnosis, and it always leads to the best possible treatment.

Experience the feeling of belonging that can only come from a healthcare team who really knows you, and knows how to care for you.



All of us for all of you.

Experience Englewood Health.  
[englewoodhealth.org](http://englewoodhealth.org)



NOW EXCLUSIVELY ONLINE OR BY PHONE



Same day delivery throughout  
Bergen County & NYC

Weekly flower and orchid plant  
rotations for your home or business

Flowers and decor for your  
special events

ORDER

201.816.0100 M-F, 9:30 am - 5:30 pm  
[deanstreetgreenery.com](http://deanstreetgreenery.com)

The only Range sophisticated  
enough to be a Miele.



235 McLean Blvd.  
Route 20 North, Paterson  
973-247-1860  
[RenosAppliance.com](http://RenosAppliance.com)

More than just the best price since 1951.



Proudly Supports

Bergen Performing Art Center



Matrix Mechanical Corp.

HVAC Design • Build • Maintenance

Fadi & Terri Chartouni

47-15 35<sup>th</sup> Street  
Long Island City, NY 11101

Tel: (718) 707-0900      Fax: (718) 707-0611



**Children Can GO Beyond the  
Obstacles of a Learning  
Disability.**

**We Can Help.**

For 26 years, Banyan School has helped students who learn differently establish the roots necessary to grow by focusing on the development and reinforcement of the reading, language and communication skills critical for academic success. With small classes, individualized attention, integrated assistive technology and a talented, dedicated staff, we are committed to establishing the foundation that students need for learning and social-emotional development.

*From strong roots come strong minds!*

- **ELEMENTARY SCHOOL**  
Fairfield, NJ • (P) 973-439-1919
- **HIGH SCHOOL & LIFE ACADEMY**  
Little Falls, NJ • (P) 973-785-1919



# 2020 SUMMER PROGRAMS



*Photos by Jeremy Lebled*

## **Musical Theater Summer Camp**

This program is for children ages 5-12, and features theater games, dance combinations, choreography, music appreciation, singing, acting the song, arts and crafts, and much, much more. With a final showcase on the bergenPAC Taub main stage, every child will feel like a star!

*July 6, 2020 – July 24, 2020 (Monday thru Friday, 9AM–4PM)*

*August 3, 2020 – August 21, 2020 (Monday thru Friday, 9AM–4PM)*

## **Musical Theater Workshop**

This workshop is for ages 13-18 and features in depth training in musical theater dance styles, acting and focus on monologues, and musical theater vocal technique and repertoire to hone your triple threat skills. Culminates with a performance in the Cabaret Room of the bergenPAC with scenes from popular musicals.

*July 6, 2020 – July 24, 2020 (Monday thru Friday, 6PM–8PM)*

## **College Audition & Filming Workshop**

This intensive workshop is for high school students to prepare for the college audition process in musical theater - how to audition, common techniques, resume and head-shot preparation, intensive practice sessions in vocal technique, acting to prepare monologues and musical theater dance styles to prepare students for all aspects of the audition. At the end of the workshop students take home a sample prescreening video that they can use for auditions and competitions.



**bergenpac.org/education • 201-482-8194**



**1 Depot Square • Englewood, NJ • 07631**

**MAKE EVERY MOMENT  
EXCEPTIONAL**

Allegro in Harrington Park delivers elevated senior living in an exquisite setting overlooking the Oradell Reservoir and Emerson Woods. In elegant private apartments, seniors find daily fulfillment through lavish amenities and lifestyle programs, exceptional cuisine, and the exemplary care Allegro Senior Living has provided for more than 20 years.

**OPENING FALL 2020  
WELCOME CENTER OPEN**

200 Old Hook Road  
Harrington Park, NJ 07640  
201.345.5264 [AllegroIsComing.com](http://AllegroIsComing.com)

**Allegro**  
HARRINGTON PARK

Independent Living | Assisted Living | Memory Care



# LEAD THE WAY

## FOR SUCCESS

Hannah Dubroff was accepted into the prestigious Tanglewood Music Institute this summer! Over 5,000 students applied to this program and only a few hundred students were accepted. This is one of the top pre-college vocal training programs in the country. Bravissimo!

We need you to play a supporting role.  
Visit [bergenpac.org/donate](http://bergenpac.org/donate) today.

#LEADTHEWAY



# Johl & Company

## INSURANCE

199 CENTER AVENUE  
WESTWOOD, NJ 07675

(201) 664-2973 Phone

(201) 664-7015 Fax

[WWW.JOHL.COM](http://WWW.JOHL.COM)

## PERSONAL & BUSINESS INSURANCE

SANDRA J. EWEN CPIA  
SANDRA J. McLEOD, CPA, CIC







[www.metroplantexchange.com](http://www.metroplantexchange.com)

**1-800-METRO-13**  
**OPEN 365 DAYS**

2125 Fletcher Ave  
Fort Lee, NJ 07024

471 Mt. Pleasant Ave  
West Orange, NJ 07052

840 Rt. 17 North  
Paramus, NJ 07652

Metropolitan Farm  
119 Hickory Lane  
Closter, NJ 07624

[www.metroplitanfarm.com](http://www.metroplitanfarm.com)

Indoor Plants - Garden Center - Home Décor & Accessories

Weddings & Events - Fresh & Silk Flowers

Local & Worldwide Delivery

# G·R·I·S·S·I·N·I

R E S T A U R A N T

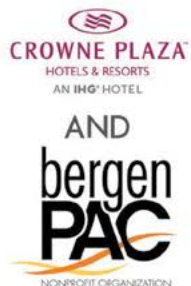
484 SYLVAN AVE,  
ENGLEWOOD CLIFFS, NJ 07632  
(201) 568-3535  
[GRISSINIRESTAURANT.COM](http://GRISSINIRESTAURANT.COM)



HOURS:  
MONDAY- THURSDAY 11:30AM - 10PM  
FRIDAY 11:30AM TO 11PM  
SATURDAY 4PM - 11PM · SUNDAY 4PM - 9PM

WE ACCEPT ALL MAJOR CREDIT CARDS





## PAC TODAY! STAY AT THE CROWNE PLAZA ENGLEWOOD

Conveniently located in Northern New Jersey  
Less than 1 mile from Bergen PAC & minutes from Manhattan  
Blue City Grille, Lounge and Bar  
Shuttle Service Available, within 5 miles  
Over 5,000 sq. ft. of flexible meeting space

**Social Events. Weddings. Reunions.**



401 S. Van Brunt St. Englewood, NJ | 201 871 2020 | [www.cpenglewoodhotel.com](http://www.cpenglewoodhotel.com)

# TACOS, GIANT BURRITOS, FAJITAS, SALADS, MARGARITAS AND MORE...



**Catering & Parties ★ Dining ★ Full Bar**  
**Happy Hour Specials ★ Live Music**

Wide  
Screen  
TVs

**Dine at Blue Moon before or after the show &  
receive \$5.00 off with today's ticket stub**

(with a purchase of \$15 minimum and cannot be combined with other offers)

**23 E. Palisade Ave., Englewood - 201-541-0600**

*just a quick walk from Bergen Pac, turn right out of the theatre onto Van Brunt  
& at the light turn left onto E. Palisade Ave. & walk up two blocks,  
we are on the left, we hope to see you #AtTheMoon!*

**Let's Get Social....@BlueMoonMexCafe**  
**Music & Entertainment on most Friday and Saturday Nights**  
**after the show, check our schedule online:**  
**[www.BlueMoonMexicanCafe.com](http://www.BlueMoonMexicanCafe.com)**



# VOICES IN HARMONY



**Sunday, March 29, 2020 • 2PM**

Voices in Harmony is a musical celebration featuring students from all over the New Jersey area. The Performing Arts School, The Alliance of Private Special Education School of North Jersey and ASAH are proud to collaborate with schools for students with special needs who will be starring in this celebration. Students have been rehearsing since early September and are eager to show their talents on the Taub Stage at bergenPAC.

*Photos by Jeremy Lebled*



## CATERING, CAKES & CUISINE



**La Promenade is a dynamic gourmet food retailer and off-premises catering company,** which takes great pride in making your special event incredibly memorable. We specialize in catering and event production for weddings, Bar/Bat Mitzvahs, corporate events, and any special occasion.

**137 PIERMONT ROAD, TENAFLY, NJ 07670  
(201) 567-2500 • WWW.LAPROM.COM**





The Community Chest wishes the  
bergenPAC a highly successful  
2019-2020 season

**When you're having a mental health crisis,**



***immediate help is just a phone call away.***

The CBHCare Wellness & Support Center provides Bergen County residents experiencing a mental health crisis with 24/7 rapid response and mobile early intervention stabilization and support services.

*(must be 18 years or older, with a diagnosable mental illness)*

**By phone 24/7:**

**201.957.1800**

**Walk-ins:**

**Monday - Friday: 8 a.m. – 8 p.m.**

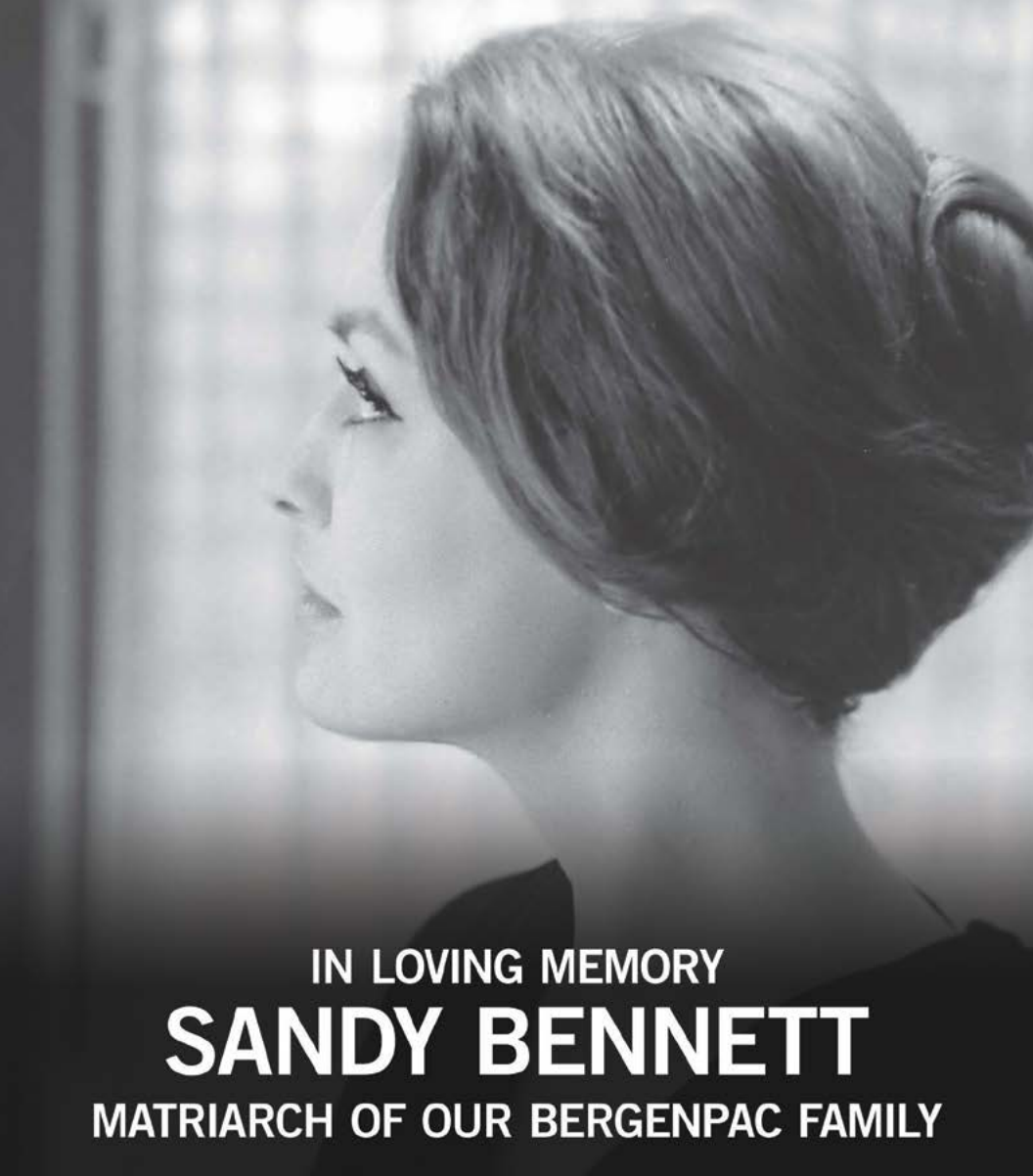
**Saturday & Sunday: 9 a.m. – 5 p.m.**

CBHCare Wellness and Support Center  
569 Broadway • Westwood, NJ 07675  
[www.cbhcare.com](http://www.cbhcare.com)

**CBH**  *Care*

**Compassionate Care. Expert Treatment.**





IN LOVING MEMORY  
**SANDY BENNETT**  
MATRIARCH OF OUR BERGENPAC FAMILY

The Sandy Bennett Art Gallery at The Bergen Performing Arts Center is dedicated to exhibiting the work of artists of all ages and backgrounds and enriching the community through the fine arts. It is funded through the support of patrons. Many exhibited pieces are for sale and 30% of the proceeds go to further the mission of bergenPAC and the gallery.

LOCATED ON THE MEZZANINE LEVEL

SANDY BENNETT  
ART GALLERY at  
**bergen  
PAC**  
NONPROFIT ORGANIZATION



## Age-Friendly Englewood

Helping older adults age-in-place with dignity  
and independence.

Making Englewood great for people of *all* ages!

[www.age-friendlyenglewood.org](http://www.age-friendlyenglewood.org)

In celebration of **Older Americans Month** in May,  
please join us for a special performance  
at BergenPAC



**Enter code "Boogie" for a 10 percent discount!**

To find out more about Age-Friendly Englewood  
or to join our email list, call 201-591-5162  
or email [agefriendlyenglewood@gmail.com](mailto:agefriendlyenglewood@gmail.com)



# LEAD THE WAY

## FOR EXCITEMENT

bergenPAC's Arts Access Initiative provides free tickets to organizations serving individuals who would otherwise be unable to visit the theater due to financial limitations. Last year, the Arts Access Initiative provided 12,035 free tickets to 82 organizations.

We need you to play a supporting role.  
Visit [bergenpac.org/donate](http://bergenpac.org/donate) today.

#LEADTHEWAY



## PERFORMANCE ENVY? WE CAN HELP!



*Family Owned Since 1910*

## O. DiBella Music

456 S. Washington Ave Bergenfield, NJ 07621  
[www.odibellamusic.com](http://www.odibellamusic.com) (201) 385- 5800

Musical Instruments • Audio Visual  
Sales • Repairs • Lessons  
Rentals • Service • Installation






COMMERCIAL . RESIDENTIAL . INSTITUTIONAL  
QUALITY ALTERATIONS AND NEW CONSTRUCTION  
BUILDING AND FACILITY MAINTENANCE

SINCE 1946.

CRESSKILL, NJ  
BERGENFIELD, NJ  
201 568 1100

jcampoli.com  
 /jcampoliandsons



## TJ's Southern Gourmet

"FOOD THAT WARMS THE HEART"

58 WEST PALISADES AVENUE ENGLEWOOD, NJ 07631

(201) 608-5026

BYOB



RESTAURANT & CATERING SERVICES  
INSTAGRAM TJS\_SOUTHERN



ArtRide  
NEW JERSEY

Discover  
**JERSEY  
ARTS**

my

never miss  
what's next

member card

Members enjoy ticket  
deals, special offers, the  
latest news, and all things  
behind-the-scenes.



Join today at  
**JerseyArts.com/membership**

connect with us



## THE DERMATOLOGY CENTER

*The* Upstairs  
**Beauty Spa**

### A FULL SERVICE MEDICAL SPA

Our experienced staff provides  
complete hair, nail, skin and body care.  
We specialize in expert anti-aging  
treatments. Gift cards are  
available for individual treatments,  
Half and Full Days of Beauty.

201-567-6020

[www.TheBeautySpa.com](http://www.TheBeautySpa.com)

*Downstairs*

**THE MEDICAL GROUP**

201-568-6977

**Herbert S. Feinberg, M.D.**

**Andrew G. Woolrich, M.D.**

DERMATOLOGY--Botox®, fillers,  
hair transplants, laser resurfacing,  
spider veins and hair removal

[www.DermCtrNJ.com](http://www.DermCtrNJ.com)

**David Abramson, M.D.**

PLASTIC SURGERY--Breast augmentation,  
mastopexy, body contouring, facelifts,  
blepharoplasty and breast reconstruction

[www.DrAbramson.com](http://www.DrAbramson.com)

**The Hair Transplant Center of NJ**

State of the Art FUE ROBOT  
and FUT TRANSPLANTS



[www.HairMD.com](http://www.HairMD.com)



HOME OF THE ARTAS ROBOT

363 Grand Avenue, Englewood, New Jersey 07631/one block north of Rt. 4





## Offering help and hope to stroke and brain injury survivors to recover their speech throughout northern New Jersey

ADLER APHASIA CENTER  
60 WEST HUNTER AVE.  
MAYWOOD, NJ  
201.368.8585

ADLER APHASIA CENTER AT WEST ORANGE  
JCC METROWEST  
760 NORTHFIELD AVE.  
WEST ORANGE, NJ 07052  
973.530.3981

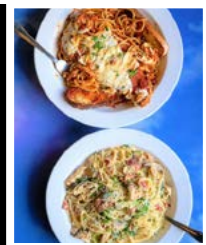
APHASIA COMMUNICATION GROUPS  
LOCATED IN  
BRIDGEWATER, HAMMONTON, MAYWOOD,  
MONROE, MORRISTOWN, SCOTCH PLAINS  
AND TOMS RIVER, NJ  
201.368.8585

### **a·pha·sia** (uh-fay'-zhuh) *n.*

A language disorder that impairs the expression and understanding of spoken language, reading and writing. It occurs most often from a stroke or brain injury. This frustrating condition affects a person's ability to communicate, but does not affect his or her intellect.

[www.AdlerAphasiaCenter.org](http://www.AdlerAphasiaCenter.org)

*Adler Aphasia Center is a 501c(3) non-profit organization*



...as seen on



Guy Fieri's *Diners, Drive Ins & Dives*, *Food Paradise*, *Cake Boss*, *AOL*, *Cooking Channel's Thanksgiving Grub Down with Carla Hall*, *Thrillist*, *Delish*, *INSIDER*, *ABC*, *NBC*, *NY Daily News*, *BuzzFeed*, *CheatDayEats*, *In the Know*, *Foodie*, *201 Magazine*, *Boozy Burbs*, *Bergen Health & Life* and *Tastemade*



OPEN EVERYDAY  
7 AM — 10PM

SERVING  
BREAKFAST,  
LUNCH and  
DINNER!



860 River Road, Edgewater | 717 Palisade Avenue, Englewood Cliffs  
(corner of Sylvan Ave & Palisade Ave)

201.945.4800 | [brownstonepancakefactory.com](http://brownstonepancakefactory.com)

[brownstone\\_pancake\\_factory](https://www.instagram.com/brownstone_pancake_factory)





The Show Choir at The Performing Arts School gives teens the opportunity to sing with world-class acts on the Taub Stage at bergenPAC, like The Midtown Men, Foreigner and Kristin Chenoweth. This is just one way we **LEAD THE WAY** in performing arts education in northern New Jersey. You can help us do even more for the local community by donating today at [bergenpac.org/donate](https://bergenpac.org/donate).

*Photo by Jeremy Lebled*





*Coming this Spring!*



### *Don Quixote*

**Saturday, April 18 8:00PM**

New Jersey Ballet premiered Don Quixote 2011, and it had made it to the Star-Ledger's prestigious Top Ten dance events of the year. Don Quixote is rich in Spanish color, flavor, and the laugh-out-loud humor of Cervantes' masterpiece about an old knight, his squire, and their foray into the age of chivalry.

### *Cinderella*

**Sunday, April 19**

**1:00PM & 4:00PM**

One of New Jersey Ballet's most popular productions for children, Cinderella is a two-act romp through the well-known fairy tale in which a girl loses a dancing slipper and finds happily ever after with a prince. New Jersey Ballet's hallmark "Storyteller" narration makes sure even the littlest theater-goers can keep up with ease.



**NJBallet**  
New Jersey's Premiere Dance Company

[www.njballet.org](http://www.njballet.org)



**EL TANGO**  
*Argentina Grill*

**22 N. VAN BRUNT ST. ENGLEWOOD, NJ**  
**201 408 2922**

*Authentic*  
**ARGENTINE GRILL**

[www.ElTangoArgentinaGrill.com](http://www.ElTangoArgentinaGrill.com)  
[ElTangoArgentinaGrill@gmail.com](mailto:ElTangoArgentinaGrill@gmail.com)



# LEAD THE WAY

## FOR LEARNING

bergenPAC's mission is to make the arts accessible to all children. Kids who are exposed to the arts gain the confidence to face life as an adult – in whatever they aspire to become.

The Performing Arts School has awarded over \$100,000 in need-based scholarships so no child is turned away.

We need you to play a supporting role.  
Visit [bergenpac.org/donate](http://bergenpac.org/donate) today.

#LEADTHEWAY



Photo by Jeremy Lebled

## Dedication...

Buying or selling a home can certainly be overwhelming. As your agent, I will be dedicated to helping you make that process a satisfying experience through closing and beyond. My wholehearted commitment, devotion and enthusiasm for your needs are practices you may rely on. Having been a long time resident in Bergen County and a Sales Associate for Prominent Properties Sotheby's International Realty, I am determined to give you my very best!

For me, DEDICATION is not just a word,  
it's my promise in working with you!

PETER A. SCHOENFELD

Sales Associate REALTOR®

c. 917.847.8478 | o. 201.585.8080

[peter.schoenfeld@sothebysrealty.com](mailto:peter.schoenfeld@sothebysrealty.com)



Prominent  
Properties

Sotheby's  
INTERNATIONAL REALTY

457 Sylvan Avenue, 2<sup>nd</sup> Floor  
Englewood Cliffs, NJ 07632  
[prominentproperties.com](http://prominentproperties.com)

Each franchise is independently owned and operated. 



## \$1,000,000+

The Russell Berrie Foundation

## \$100,000-\$999,999

Donald & Deborah Aronson  
Marc & Robin Byron  
Robert & Judy Cook  
Fadi Chartouni | Matrix Mechanical  
Couristan | Ron & George Couri  
Eugene & Julie Diaz  
Donald G. Drapkin  
Karen Eisenbud  
Frank Huttie III & Valerie Vainieri  
Huttie  
The Kaplen Foundation  
Bernard Koster & Norma  
Wellington  
Sam & Emily Mann  
Erik & Jill Maschler  
Eileen Murray  
RITTA  
The Russo Family Foundation  
Mitchell & Kelly Sacks  
Realf & Koryn Schermer  
Edmondo & Miyako Schwartz  
The Henry & Marilyn Taub  
Foundation  
Rich & Aleta Taylor  
Chris & Lonna Yegen  
**\$50,000-\$99,999**  
J. Agresta  
George & Jane Bean  
Blanch & Irving Laurie  
Foundation  
Jake Chung  
Crestron Electronics  
Ludmilla Golad | PNC Bank  
Amelia Gold  
Rafi Jafri  
Michael & Jacqueline Kempner  
Kim & Bae PC | Christine Bae-Kim  
Roberta Mathes

Devry Pazant | TD Bank  
Susan & Andy Russ  
Susan Scimone-Bellini | Lakeland  
Bank  
Michael Shannon  
CJ Strock

## \$25,000-\$49,999

Hetal Gor  
Michelle & David Oropeza  
Kay Ritta & Sheldon Liebowitz  
Dominic & Kelly Roncace  
Shirley Shapiro  
Stuart & Martha Tell  
Alan & Mary Beth Wilmit  
Frank Zampini  
Penni Zola

## \$10,000-\$24,999

Benzel-Busch Motor Car Corp.  
Stephen Borg  
Edward & Gail Butler  
Gretchen & Jim Ciavaglia  
Jonathan & Lorin Cook  
Robert & Wendy Federman  
Jack Feiler  
Herbert & Deana Feinberg  
Mr. & Mrs. Richard Gerstman  
Leen Mosely  
Sharp Electronics  
The Sylvia & Stanley Shirvan  
Foundation, Inc.  
Yorke Construction Corp.

## \$5,000-\$9,999

Mr. & Mrs. Joseph A. Agresta, Jr.  
Beck Design  
Howard & Anita Blatt  
Drs. Arnold & Sandra Gold  
Gordon & Jacqueline Johnson  
Lautenberg Foundation  
Steve & Michele Maroti  
Thomas Palermo

Nancy & Louis Sheffler  
Arthur & Diana Waill  
David Rodriguez & Pam Wiest  
**\$1,000-\$4,999**  
Kenneth Albert  
Drs. Robert & Jennifer Ashton  
Murray & Lovey Beer  
Sandy Bennett  
Bergen County Camera  
Harvey & Gladys McGuire Bower  
Mr. & Mrs. Anthony Carbone  
Ira & Julie Cohen  
John Devol  
Armando & Dawn Diaz  
George & Venetia DiMarzo  
Dr. Hugh & Linda Evans  
Brian Benson & Amelia Gold  
David Jeffrey  
Bob & Muriel Kennedy  
Joseph & Judith Klyde  
Nathan & Carol Lerer  
Kate Liebhold  
Nathan & Shari Lindenbaum  
Martin Perlman & Jo-Ann Hassan  
Lloyd Putter  
Louis & Mollie Rambler  
SA Bendheim Ltd.  
Scirocco Group Inc.  
Shapiro Family Foundation  
Superior Sheetmetal  
Charles & Susan Silberman  
The Steiner Group  
Marcia Strongwater  
Vergona Crane Co., Inc.  
Wildes & Weinberg

**\$250-\$499**  
Arielle's Gallery  
Ayesha Studio & Gallery Inc.  
Jesse Baker  
Charlotte Bennett Schoen  
Stephen Brown  
Violet Cherry  
Ann & Norman Davis  
Wayne & Sylvia Golden  
Lawrence Gray  
Green Street America  
Robert & Sandra Hack  
Eva Holzer  
Jewel Spiegel Galleries  
Dr. & Mrs. Robert O. Sterns  
Theresa Thomas  
Cid Wilson  
Nancy Woods

## \$500-\$999

Roselyn Anderson  
Borghi Fine Art LLC  
Anthony & Natalie Cureton  
Timothy J. Driscoll

Joshua & Nancy Gillon  
Jerome Goldfischer & Lila Mordoh  
Jacqueline Guttman  
David & Judith Maron  
James McGuire & Stephen Coy  
Midday Gallery  
Teresa & Alfonso Morgillo  
Ken & Stacey Rosenzweig  
Anthony & Madelyn Scardino, Jr.  
Joy & Richard Segall  
Dr. & Mrs. Stuart Silberstein  
Murray & Janet Smith  
Mr. & Mrs. Anthony C. Taccetta  
Drs. Burton & Lisa Wisotsky  
Deborah Witcher Jackson

**\$250-\$499**  
Arielle's Gallery  
Ayesha Studio & Gallery Inc.  
Jesse Baker  
Charlotte Bennett Schoen  
Stephen Brown  
Violet Cherry  
Ann & Norman Davis  
Wayne & Sylvia Golden  
Lawrence Gray  
Green Street America  
Robert & Sandra Hack  
Eva Holzer  
Jewel Spiegel Galleries  
Dr. & Mrs. Robert O. Sterns  
Theresa Thomas  
Cid Wilson  
Nancy Woods

## \$100-249

Robert Abreu  
William & Ann F. Baretz  
Miriam Batkin  
Debbie Beeber & Jerry Nussbaum  
Rosalie Berlin  
Nellie Bobe

Gary & Judy Brauner  
Kevin Coleman  
Albert & Joan Cuniffe  
Juanita Dennis  
Bernard Beutchman  
George & Adrienne Diana  
Anna DiLullo  
Nancy Ferer  
Jakob Franke  
Emilie Greco  
John & Elizabeth Halverstam  
Wayne Hamer  
Esther & Monica Honis  
William & Kathleen Keller  
Lois Kempner  
Mr. & Mrs. R. Killeen  
Judith Lepko  
Bruce Margolin  
Marvin & Laura Mausner  
Herbert & Teruko Neuwalder  
Dr. Dierdre Paul  
Renata Pestic  
William & Marguerite Pfeiffer  
Richard & Alice Pierson  
David & Yael Polinsky  
James & Elaine Pontone  
Noreen & Barrett Pettyman  
Henry & Tracey Pruitt  
Mr. & Mrs. Fredric Robins  
Joanne Santiglia  
Barry & Ira Seplowitz  
Carla Shears-Jones  
Samuel & Sandra Slipp  
SonRise Development Corporation  
Kenneth J. Tanis  
Harley Ungar  
Gerald Wolf

## \$99 AND BELOW

Linda Bennett  
Business Promotion Ideas, Inc.

Douglas & Karen Charipper  
James Cunningham  
Daniel & Robin Daniel  
Elizabeth DiVizio  
Paul Eisenman  
Laura Feinberg  
Allen Feltman  
John Ford  
Pamela Gilmore  
Linda & Phillip Gould  
Bruce & Lila Halstater  
Alex Holman  
Sylvia Kleister  
Steve Klose  
Dr. Jerry D. Lamb  
Dr. Arthur Lerman  
Herman & Roselyn Leiberman  
Elliot Maza  
Jackie E. Park  
Renetta Pierce-Fitzgerald  
Mary Carole Regan  
Norbert Richter  
Cara Sheffler  
Jack Silberman  
Robert & Diane Smith  
Kurt & Carolyn Stenzel  
Douglas K. Vander Brink  
Jeffrey & Susan Wild



# CURRENT SUPPORTERS

The Board of Trustees of the Bergen Performing Arts Center gratefully acknowledge our annual contributors, whose gifts support artistic programs, education, outreach and operations.

This list reflects the contributions received between **November 1, 2018** and **November 19, 2019**.  
*Please note that space limitations allow us to list only donors of \$100 or more.*

## CHAIRMAN'S CIRCLE (\$10,000+)

All Shows  
Brad & Pamela Ashe  
Benzel-Busch Motor Car Corp.  
Bergen Town Center  
BMW Tenafly  
The Blanche & Irving Laurie Foundation  
Care One Ridgewood & Cupola  
The Cestone Family Foundation  
Ron Couri  
Englewood Health  
Hackensack/Meridian Health  
Henry & Marilyn Taub Foundation  
Jaguar Land Rover Englewood  
Jaguar Land Rover Paramus  
The Kaplen Brothers Fund  
The Kaplen Foundation  
Kay Ritta Scholarship Fund  
Machinery Services Corp.  
Myron & Elaine Adler Private Foundation  
New Jersey State Council on the Arts  
NVE Bank  
Penske Automotive  
The PNC Foundation  
Public Service Electric & Gas  
Public Service Electric & Gas Foundation  
Rapid Pump & Meter Services Co., Inc.  
RITTA  
Robert & Catherine Murray Charitable Trust  
Russell Berrie Foundation  
Ruth's Chris  
Suez  
TD Charitable Foundation  
Tice's Corner Marketplace  
Wells Fargo Foundation

Westfield Garden State Plaza  
William T. Morris Foundation  
Wilmington Trust/M&T

## DIRECTOR'S CIRCLE (\$5,000-\$9,999)

ABM Aviation  
Age Friendly-Englewood  
Biddy O'Malley's  
Blue Moon Mexican Café  
Edward & Gail Butler  
Community Chest of Englewood  
ConnectOne Bank  
Couristan  
El Tango Argentina Grill  
Roberto Fata  
Jewish Federation of Northern New Jersey  
Jewish Home Foundation of North Jersey, Inc.  
Johl & Company  
La Promenade  
Matrix Mechanical Corp.  
Neiman Marcus  
The River Palm Terrace  
Sheila Rizzo  
Sofia  
Steinway & Sons  
Benay & Steven Taub  
Frank Zampini

## UNDERWRIGHTER'S CIRCLE (\$3,500-\$4,999)

Akai Lounge  
Banyan School  
Brownstone Pancake Factory  
Fort Lee Holiday Inn  
Grissini's Restaurant  
Holy Name Hospital  
LaMezza  
Price Meese Shulman & D'Arminio  
Superior Sheetmetal  
Tenafly Pediatrics

## SUSTAINING PATRON (\$1,000-\$3,499)

AARP  
Brian Abrams  
Dana & James Adler  
George Ahto  
Christopher & Adrienne Anderson  
Gerald Appelstein  
Dr. Jason R. Baynes & Dr. Sydelle Ross  
BBZ Limousine & Livery Service  
Bella Vista Supply, LLC  
Dr. & Mrs. Louis Bellotti  
Rosalie Berlin  
Marc Berman  
Mr. & Mrs. Thomas Biggar  
Lawrence Blenden  
Bloomingdale's  
Boulevard Carroll Entertainment Group Inc.  
Capacity Coverage/EPIC  
Cassie's Restaurant  
CBH Care Wellness & Support  
Cedar Lane Management Group  
Leslie Chiocco  
Choosing Health  
Jake Chung  
Gretchen & Jim Ciavaglia  
Crowne Plaza Hotel  
Joseph Damato  
John Delucca  
Dermatology Center  
Thomas Eastwick  
James Egarian  
Raymond Eisdorfer  
Emergendise  
Richard Engel & Swati Rao Engel  
Dimitri & Maria Feo  
Doreen & Allen Fischbein  
Susan & Laurence Frank  
Harriet & David Fry

Brandi Gil  
Mr. & Mrs. Josh Gillon  
Gary & Sherry Glanzberg  
Paul & Melissa Gordon  
Lawrence Gray  
Kenneth & Theresa Hoberman  
Michael Holst  
The Huisking Foundation, Inc  
IATSE Local 632  
Frank J. Lula  
Investors Foundation  
J. Fletcher Creamer & Son, Inc.  
Barbara Kessler  
Joseph Laino  
Landry's  
RoseAnn LaPorta & Stephen LaPorta  
Rebecca & Seth Lipschitz  
Martin Lucibello  
Theodore Marcus  
Steven & Suzanne Mattiace  
William Mihatov  
Richard J. & Gloria E. Moylan  
New Jersey Ballet  
Kevin Nolan  
Oceanaire  
O. DiBella Music Inc.  
Richard Perrin  
Lisa Peterson  
Joanne & Peter Petrone  
Joe & Jeanne Polizzano  
Jamie Pollack  
Gary & Lisa Press  
Susan Ramundo  
Reno's Appliance & TV  
Grace Ricigliano and Flo Ricigliano  
Matthew Ross  
Hon. Steven R. Rothman  
Mr. & Mrs. Jules Royak  
Sotheby's  
Michael Spino

Nancy Stathes  
Laurin & Adam Steiger  
TD Bank  
TJ's Southern Gourmet  
Ticketmaster  
Alan Todd  
Prof. Gerard J. Tortora  
Vero Uomo  
Ms. Naida S. Wharton  
Robert Williams

## BENEFACTOR PATRON (\$700-\$999)

Patricia Billotti  
Thomas Bowman  
Gary & Sherry Glanzberg  
Russo Real Estate  
Trywhip.com

## PATRON (\$250-\$699)

Wilson & Gloria Aboudi  
Paul Adams  
Ida M. Astute  
Robert & Ellen Bakish  
June Baldino  
Richard & Jill Baratta  
Gail Baskerville-Norris  
John Bauer  
Margaret Benson  
Deborah Berman  
Yale & Myrna Block  
Diane Botta  
Charles Bowman  
Glenn Boyd & Lisa Ani Garapedian  
Geraldine Braimon  
John Brehm  
Carlos & Traci Ceballos  
Judy Chang  
Anthony Cicero  
Jeanne Clapper  
John Collier  
Michael Costello

Counter Productions Inc.  
Daniel Danzico  
Michele DeBlasi  
Cathy DelGardo  
Tim Desmond  
Alphonse Di Ambrosio  
George & Venetia DiMarzo  
Elke & Dino D'Onofrio  
Lucy Duffy  
East Rutherford Senior Citizens Inc.  
Dorothy Elk  
Elaine Ernst  
Ann Evensen  
Susan Ferguson  
Linda Fialkoff  
Sandy & Abe Fichtenbaum  
Lawrence Finch  
Paul & Estelle Flores  
Frank & Carol Floriani  
Robert & Luz Garvey  
Michael Glantz  
Eric Goebelbecker  
Brett Goldblatt  
Terese Goodman  
Janet Gordon  
Anthony Greco  
Thomas Greene  
Semih Gungor, MD  
Joe Hallak  
David Harris  
Chris & Donna Hasiotis  
Stanley Heimberger  
Brian Howell  
Information Business Technologies Inc.  
Johnson & Johnson  
Bonnie Kaplan  
Wendy Kelly  
Patricia Korshalla  
Susan Lerner  
Elias Liatsis



# CURRENT SUPPORTERS

The Board of Trustees of the Bergen Performing Arts Center gratefully acknowledge our annual contributors, whose gifts support artistic programs, education, outreach and operations.

This list reflects the contributions received between **November 1, 2018** and **November 19, 2019**.  
*Please note that space limitations allow us to list only donors of \$100 or more.*

Kate Liebhold  
Junior Maldonado  
Marc McBrearty  
Katherine McGarril  
George McGrath  
Meadowlands Regional Chamber  
Anthony & Jeannine Mondaro  
Marlene Moskowitz  
Ken & Susie Ng  
Karen & William Nicodemus  
Kevin Okeefe  
Nancy & Michael Passow  
Peter & Phyllis Price  
Kevin & Joya Puzio  
Daniel & Cristina Rackow  
Richard H. Holzer Memorial  
Foundation  
Rochelle Park Senior Citizen  
Travel Club  
David Rodriguez & Pam Wiest  
Robin & Steven Rogers  
Pam Jones & Terry Rothlisberger  
Cecily Rueger  
Keith & Judy Van Sadars  
Louis Salamone & Carolyn Felder  
Louise E. Schwartz  
Howard & Sheryl Seiferas  
Jean Serpico  
Thomas & Elizabeth Shaw  
Karen Sheehy  
Malvina & Kevin Sheldon  
Linda Siluk  
Hazel Smith  
Arthur & Debra Sinensky  
Peter & Imelda Sobilloff  
Carol Sonnessa  
Beth Sparozic  
Victoria & Charles Stebbins  
Annette Stern & Stephan Chait  
Jeffrey Steuer  
Ernest Tauber

Brian Targovnik  
Garrie & Alice Thissen  
Robert Tomasetta  
Abigail Weinshank  
Dr. Michele Weisman & Dr.  
Steven Gruntfest  
Wells, Jaworski & Liebman, LLP  
Barbara & Bob Whiteman  
Brian T. Wilson  
Andy Wolfe  
Stan Yoskowitz  
Helena Yuhas  
Suzanne Zampetti  
Laura Zanuso  
Stanley & Joyce Zietek

**SPONSOR (\$100-\$249)**  
A.J. Alfaro  
Reginald Alexander  
Jeffrey Allen  
Elena Alvarado, in memory of  
Gumerinda Allende  
Anonymous  
Albert & Lisa Antebi  
Jill Arslanian  
Natalie Beaumont  
Albert Berkowitz  
Bruce Bierbryer  
Carol & Jerome Bodian  
Deborah Britten  
Charles Buffamante  
Ainsley & Carla Burke  
Dennis & Nancy Buttacavoli  
Joseph John Cafaro  
Deborah Cannavale  
Vicki Carbone  
Betsey Carson  
Eileen & Marvin Charyn  
Robert Cicchino  
Mikel Cirkus  
Tony Clary, in memory of Eleanor  
Marie Clary

Jeff Conforti  
Janice Corsilli  
Charles Costa  
Joan & Al Cuniffie  
James Davis  
Susan Davis  
John Devol  
East Rutherford Senior Citizens Inc.  
Glenn Edelstein  
Karen Eisner  
Victor Emmanuele  
Patricia Faloon  
Toni Fay  
Ellen Feld  
Paul Finelt  
Esther Fishman  
Virginia Flehinger  
Timothy Fogarty  
James Foudy  
Cheryl & Kevin Francione  
Charlotte Gerstmayr  
Ellen Gerber  
Leslie Goldberg  
Michael & Suzanne Goldstein  
Lydia & Ron Greenfield  
Sandra Hack, in memory of  
Robert Hack  
Bruce Halstater  
James Hare  
Hillsdale 50 Plus Club  
John & Susan Hodge  
Nicholas Holub  
Allan Hordof  
Billy Iavarone  
Ken Inglima  
Robert & Kathy Iuliucci  
Scott Jacobs  
William Jones  
Karl Kahofer  
Maureen Keating  
Fred & Whitney Keen

Julian Keenan  
Randy Kleinwaks  
Valdone Knepa  
Georgia Kennedy Kochakian  
Elizabeth Labruna  
Scott Lange  
Lorraine Leckie  
Gary Lehner  
Hedy Litke  
Charles Lota  
Anthony Mancini  
Mr. & Mrs. Ron Marchese  
Patricia Markert  
Fred Martens  
Dr. & Mrs. Joseph G. McCarthy  
Marie McMahon  
Pamela Miller  
Anthony Miniaci  
Philip & Barbara Moss  
Victoria Motlin  
Barbara & Marc Niederhoffer  
Darryl Novak, in memory of  
Sigrid Novak  
Ollie Ottens  
Joseph Padalino  
Susan Panzarino  
Irma Perez  
Perlman Family Foundation  
Marguerite Pfeiffer  
Mr. & Mrs. Phillip Raspe Jr.  
Scott Reindel  
Robert Reitman  
David Rimmer  
Kathy Rizzuto  
Stephanie Rodgers  
David Rodriguez  
Roslyn Rolan  
Conrad Roncati  
Alan Rowland & Carolyn Heiser  
Peter Safirstein  
Linda & Richard Salzer

Cristena Santiago  
Barbra Scaduto & Abram J.  
Slominsky  
Anne Schmidt  
Timothy Schwartz  
Giacomo Selloni  
Senior Friendship Club of Carlstadt  
Doreen Severs  
Patrick Shelley  
William Smolinsky  
Brian Spillane  
Theresa S. Doyle  
June Stahl  
Lynn & Leon Stand  
Caryn Starr-Gates  
Michael Stomes  
Jean & John Suszynski  
Joseph Sylvester  
Miriam Taub  
Christina Taylor  
Gloria Tenewitz, in memory of  
Jay Tenewitz  
Madeleine Truninger  
Hon. Scott B. Ugell  
Mr. & Mrs. John Valvanis  
Jeffrey & Andria Warren  
Susan & Neil Wasserman  
Wegmans  
Rachelle & Joshua Weisberger  
Jan & Lew Weiss  
Stefan Wieland  
Jeffrey Wild  
Evelyn Wilkins-King  
Robert Zangrando  
John Zografos  
Arlene Zweifler

*We sincerely apologize if there are any  
omissions or errors in the list.*

*If your name has been misspelled, please  
call 201-816-8160 and we will correct it in  
our next program.*



# LEAD THE WAY

## FOR PERFORMANCE

Our Performing Arts School presents an annual summer musical featuring an all-student cast, technical crew and orchestra. Working alongside bergenPAC staff, students gain greater self-confidence and teamwork skills. They receive professional-level training for real-world experience they can use in their future endeavors. Past musicals include: CATS, West Side Story and Disney's Beauty and The Beast.

We need you to play a supporting role.  
Visit [bergenpac.org/donate](http://bergenpac.org/donate) today.

#LEADTHEWAY

**bergen  
PAC**  
NONPROFIT ORGANIZATION

**bergen  
PAC**  
NONPROFIT ORGANIZATION

## BECOME A PARTNER

Become a Corporate Partner of the Bergen Performing Arts Center (bergenPAC), Northern New Jersey's home for arts and education! Our 1,367-seat venue plays host to over 200 events and draws more than 150,000 customers each year.

### PARTNERSHIP HIGHLIGHTS

At bergenPAC, we have something for everyone...

- Corporate philanthropy through support of educational outreach programs
- Support art education programs in The Performing Arts School
- Support programming on the bergenPAC mainstage



### WHAT YOUR PARTNERSHIP SUPPORTS

Becoming a partner with bergenPAC not only helps promote your business, but also helps bergenPAC to provide access to the performing arts and arts education to children and families in our community who would otherwise be unable to participate because of financial, cognitive or physical barriers.



*Photos by Jeremy Lebled*

For more information, contact the Development Department at 201-816-8160 x48.



*Treasure it. Play it. Stand in awe of it.*  
**ENTERTAIN WITH IT.**



**SPIRIO**

Presenting the first high-resolution *player piano* worthy of the revered STEINWAY & SONS name. SPIRIO is a masterpiece of artistry, craftsmanship, and engineering that delivers all the nuance and passion of live performances by today's most renowned musicians from classical to jazz to rock. [STEINWAYSPIRIO.COM](http://STEINWAYSPIRIO.COM)

**STEINWAY PIANO GALLERY**

455 ROUTE 17 SOUTH PARAMUS, NJ 07652  
TEL. 201.261.8877



**STEINWAY & SONS**



**Steven L. Finkelstein**

Realtor® - Seniors Real Estate Specialist®

Office: (201) 837-8800, ext. 44 • Cell: (917) 804-2618

[stevenf@russorealestate.com](mailto:stevenf@russorealestate.com)

2018 GBAR Rising Star Awardee

NJ Realtor® Circle of Excellence Sales Award 2017-2018



Russo Real Estate • 873 Teaneck Road, Teaneck, New Jersey 07666 • [www.russorealestate.com](http://www.russorealestate.com)

*Cassie's*

RESTAURANT AND PIZZARIA

*bergen county's #1  
"family style" italian  
restaurant*

SUNDAY - THURS 11 - 10  
FRI - SAT 12-11

**New Jersey**

18 S. Dean St., Englewood  
201 541-6760

**New York**

202 Route 303, Orangeburg  
845 359-8000



# I.A.T.S.E. Local 632

is proud to be affiliated with the  
bergenPAC



Northern New Jersey Theatrical Stagehands Union since 1926



## BELLA VISTA SUPPLY BUILDING & MASON MATERIALS

### We Specialize In:

- Ready Mix Concrete – Pick Up & Delivery
- Brick, Block, Sand & Stone
- Retaining Walls Systems
- Cement & Mortar
- Pavers & Belgium Block
- Rebar & PVC Pipe
- Repair Products & more!

### Hours:

Monday – Friday: 7:00am – 3:30pm

Saturday: 7:00am – 12:00pm

Sunday: Closed

Serving Bergen, Hudson and Essex County • 973.482.1818 • [bellavistasupply.com](http://bellavistasupply.com)

Congratulations  
to the  
**bergenPAC**  
on Another Great Season!



Your Partner  
***ticketmaster***<sup>®</sup>



The cheapest distance between two points



Google play App Store

Search for Wh!p

CALLING FOR A RIDE TONIGHT?

FIND OUT THE BEST PRICE...

DOWNLOAD THE APP AND START SAVING \$\$\$

*it's free*





# Holiday Inn®

AN IHG® HOTEL

2339 Route 4 East, Fort Lee, NJ 07024

T: 201.944.5000



VERO UOMO

DISTINCTIVE MEN'S APPAREL

Sant'Andrea  
MILANO

Belvest

PAL ZILERI

VERO UOMO  
PRIVATE LABEL

FORMAL WEAR FOR YOUR SPECIAL MOMENT

Specializing in Made to Measure Suiting, Tuxedos, Shirts,  
and Ties

Tuxedo Rentals NOW AVAILABLE!

Follow us on social media!   

AVAILABLE FOR PRIVATE APPOINTMENTS

Hours of Operation  
Mon/Tues/Wed: 10am-6pm  
Thurs: 10am-8pm  
Fri/Sat: 10am-6pm  
Closed Sunday

26 E Palisade Avenue, Englewood, NJ 07631 | 201.894.1424 | verouomo@verizon.net | verouomonj.com

ESTABLISHED 1869  
**BBZ**  
LIMOUSINE & LIVERY SERVICE



www.bbzlimo.com | reservations@bbzlimo.com

800.815.LIMO | 201.501.0615  
5 4 8 6



WORK

PLAY

WEDDINGS

PROMS



  
THE OCEANAIRE®  
Seafood Room

**Fresh Seafood. Flown in Daily.**

Open for dinner daily • Lunch Tuesday - Saturday at 11:30am  
Brunch Sunday at 12pm



THE SHOPS AT RIVERSIDE

175 Riverside Square | 201.343.8862 | theoceanaire.com





**La'Mezza**  
*Lebanese Fusion Cuisine*

63 Nathaniel Place • Englewood  
201-569-2662

[www.LaMezzaRestaurant.com](http://www.LaMezzaRestaurant.com)



• Open for Lunch & Dinner  
7 Days a Week

• Mon - Fri: \$13 Prix Fixe  
Lunch Menu from 12-3pm

• Belly Dancing Sat Nights

• Mezza Monday:  
1/2 Price Appetizers!

• Catering Excellence

• Private Events Welcome

Like us on  
Facebook

**20% off**  
your total bill

## SHOP & DINE CEDAR LANE...



DINE IN • TAKE OUT  
CLOTHING • JEWELRY • SALONS • GIFTS  
JUDAICA • PICKLES • MOVIES • AND MORE

**CEDAR LANE TEANECK**

**Bergen's Best Kept Secret**

Always FREE parking • [www.cedarlane.net](http://www.cedarlane.net) • 201-907-0493

# LEAD THE WAY

## FOR SUCCESS

Ariana Perez has recently appeared as 'Rita' in the fifth episode of the final series of Orange is the New Black! Ariana played 'Teresita' in West Side Story in 2017 at the bergenPAC!

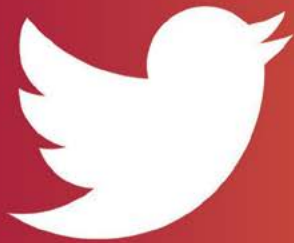
We need you to play a supporting role.  
Visit [bergenpac.org/donate](http://bergenpac.org/donate) today.

#LEADTHEWAY

**bergen  
PAC**  
NONPROFIT ORGANIZATION



# WE'RE SOCIAL!



## FOLLOW US ON YOUR FAVORITE SOCIAL MEDIA SITE!

#BERGENPAC



## BMW OF TENAFLY



### YOUR LOCAL BMW STORE FOR ALL SALES AND SERVICE NEEDS

#### BMW OF TENAFLY

301 County Road | Tenaflly, NJ 07670 | [BMWofTenaflly.com](http://BMWofTenaflly.com)

**SALES: 201-762-0951 | SERVICE: 201-903-7735**

**Sales Hours:**

Monday-Thursday: 9am-7pm • Friday: 9am-6pm  
Saturday: 9am-5pm • Sunday: Closed

**Service Hours:**

Monday-Friday: 7am-6pm • Saturday: 7:30am-4pm  
Sunday: Closed

A **PENSKE** AUTOMOTIVE DEALERSHIP



WE LOVE A GREAT PERFORMANCE IN OUR COMMUNITY.  
IN FACT, WE PUT ON HUNDREDS EVERY DAY.



Proud supporter of **bergenPAC.**

**BENZEL  BUSCH**  
MOTOR CAR CORP.

[BenzelBusch.com](http://BenzelBusch.com)